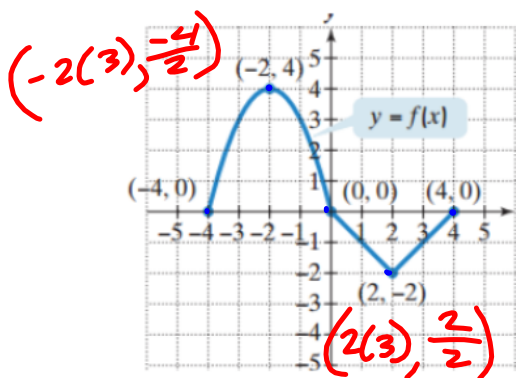


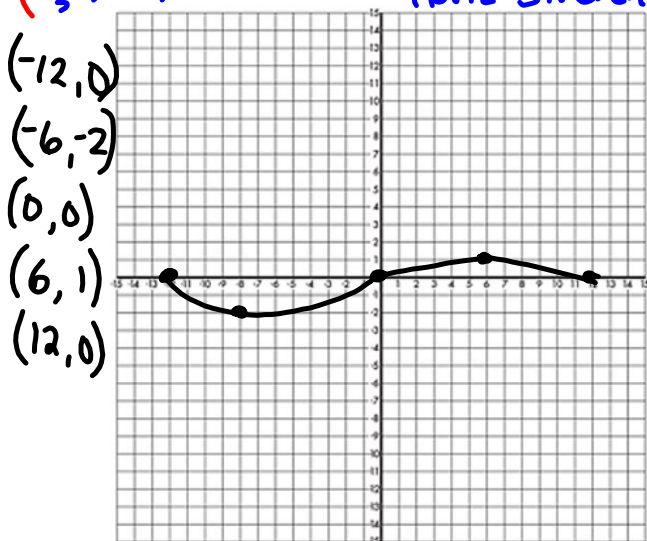
RPC Funky Transformations Practice

Name: \_\_\_\_\_ Per: \_\_\_\_\_

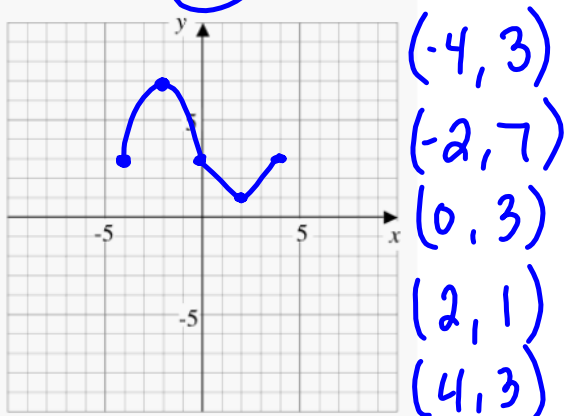
1. Use the graph of  $f$  to sketch each graph.



$g(x) = -\frac{1}{2}f\left(\frac{x}{3}\right)$   
 Reflect over x  
 vert. Shrink by 2  
 Horiz Stretch by 3



a.  $g(x) = f(x) + 3$  UP 3



c.  $g(x) = f(-x - 3)$  Reflect over y  
 Pt. 3

