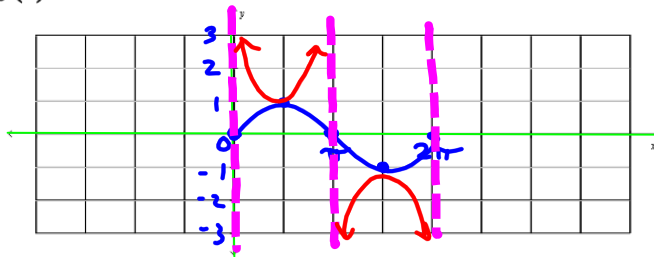


① Graph Sine/cosine

Trig Graphing Examples

1. $f(x) = \csc x \rightarrow 1 \sin x$ $a \quad b \quad c=0 \quad d=0$

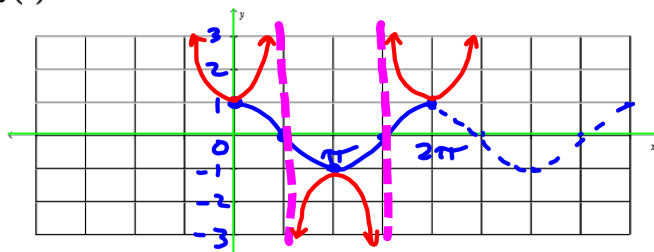
Int
Max
Int
Min
Int



$ a = 1$
Period = 2π
$\frac{2\pi}{b}$ 2π
Frequency = $\frac{1}{2\pi}$
Vertical Shift: "d" None
Phase shift: $\frac{c}{b}$ None

2. $f(x) = \sec x \rightarrow 1 \cos x$ $a \quad b \quad c=0 \quad d=0$

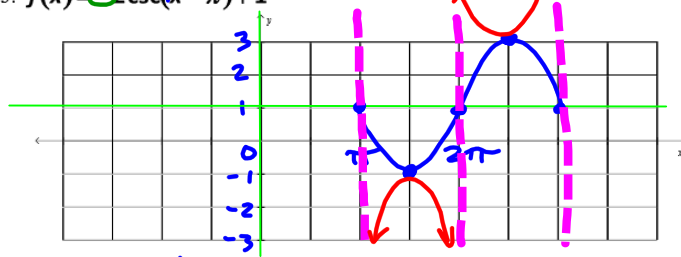
Max
Int
Min
Int
Max



$ a = 1$
Period = 2π
Frequency = $\frac{1}{2\pi}$
Vertical Shift: None
Phase shift: None

3. $f(x) = 2 \csc(x - \pi) + 1$ $a \quad b \quad c \quad d$

Int
Min
Int
Max
Int



Start: $bx + c = 0$
 $|x - \pi = 0$
 $x = \pi$

$ a = 2$
Period = 2π
$\frac{2\pi}{b}$ 2π
Frequency = $\frac{1}{2\pi}$
Vertical Shift: up 1
Phase shift: $\frac{c}{b}$ Right π (-)